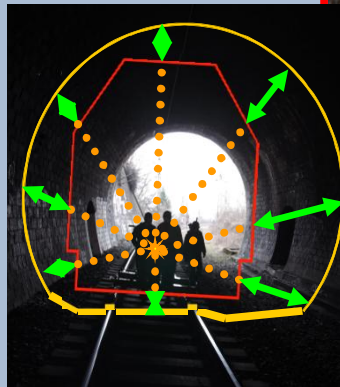
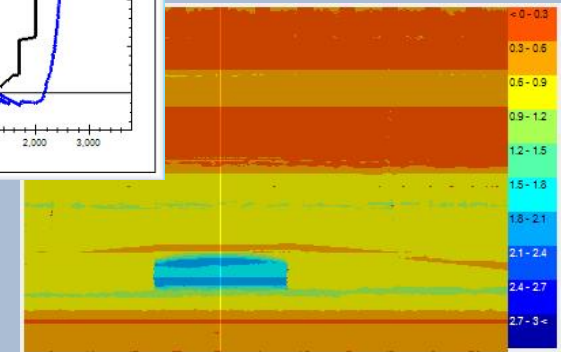
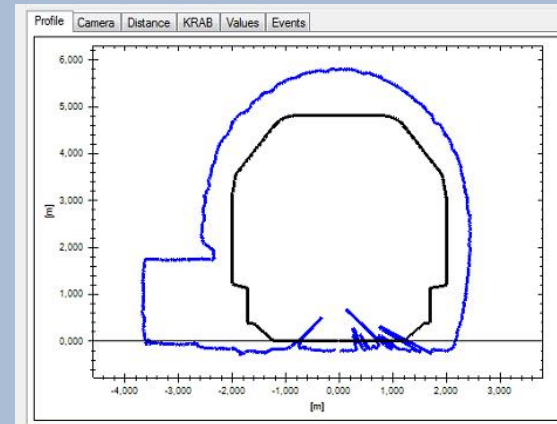
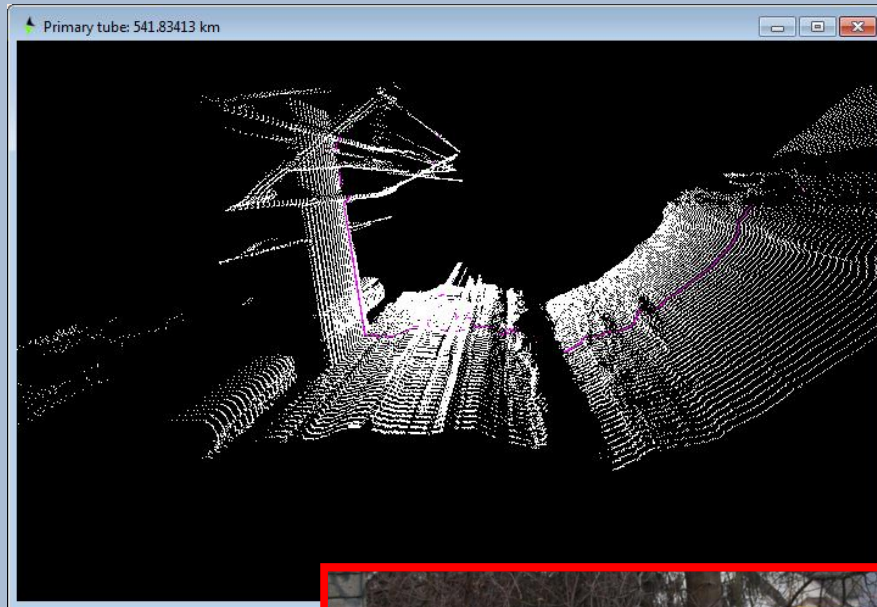


KSLT

Tunnel and Clearance Scanner

Tunnel clearance evaluating



Data description

Measured data and photos - directory:

GPK_YYMMDDHHMMSS.

Transfer by Archive function - pair of files

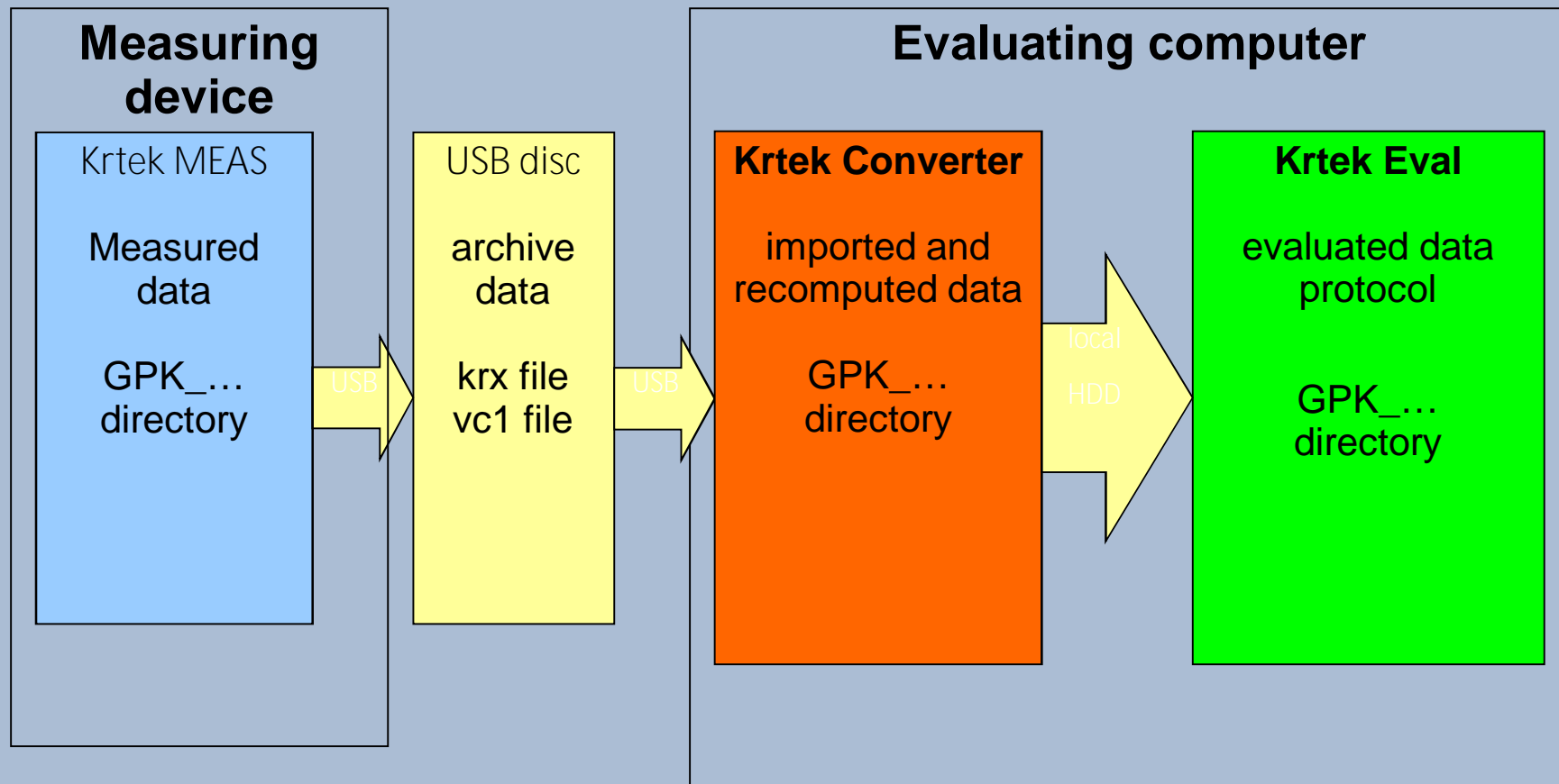
YYMMHHDDMMSS.krx ... profile and geometry

YYMMDDHHMMSS.vc1 ... camera

*Warning: Never change content of
GPK_YYMMDDHHMMSS manually. Structure of the
directory with a measurement is defined by application
program and manual modification can damage the data.*

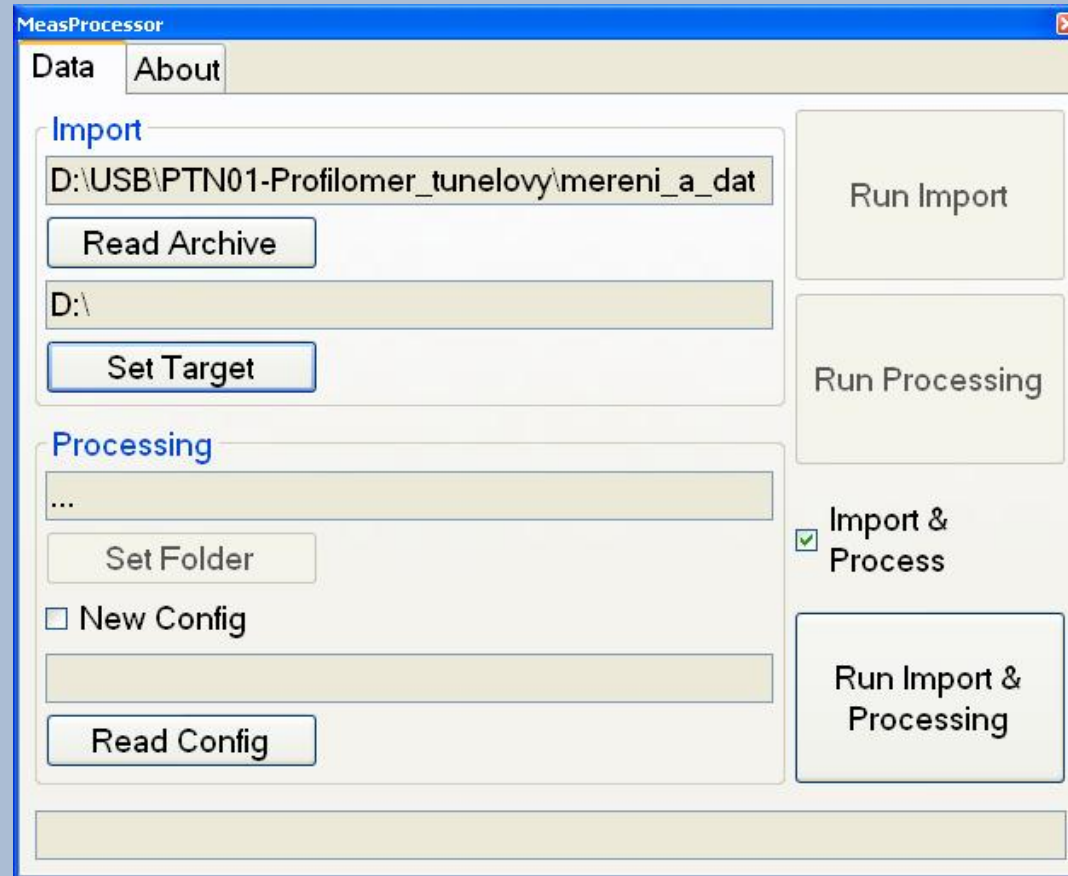
Data transfer

Principle of transfer data from the measuring trolley:



Krtek Converter

- Transfer and evaluation of data:
 - Reducing size of downloaded
 - Packaging data to protect from damage



Evaluation software

Two basic options

- Clearance evaluation
- Comparative evaluation

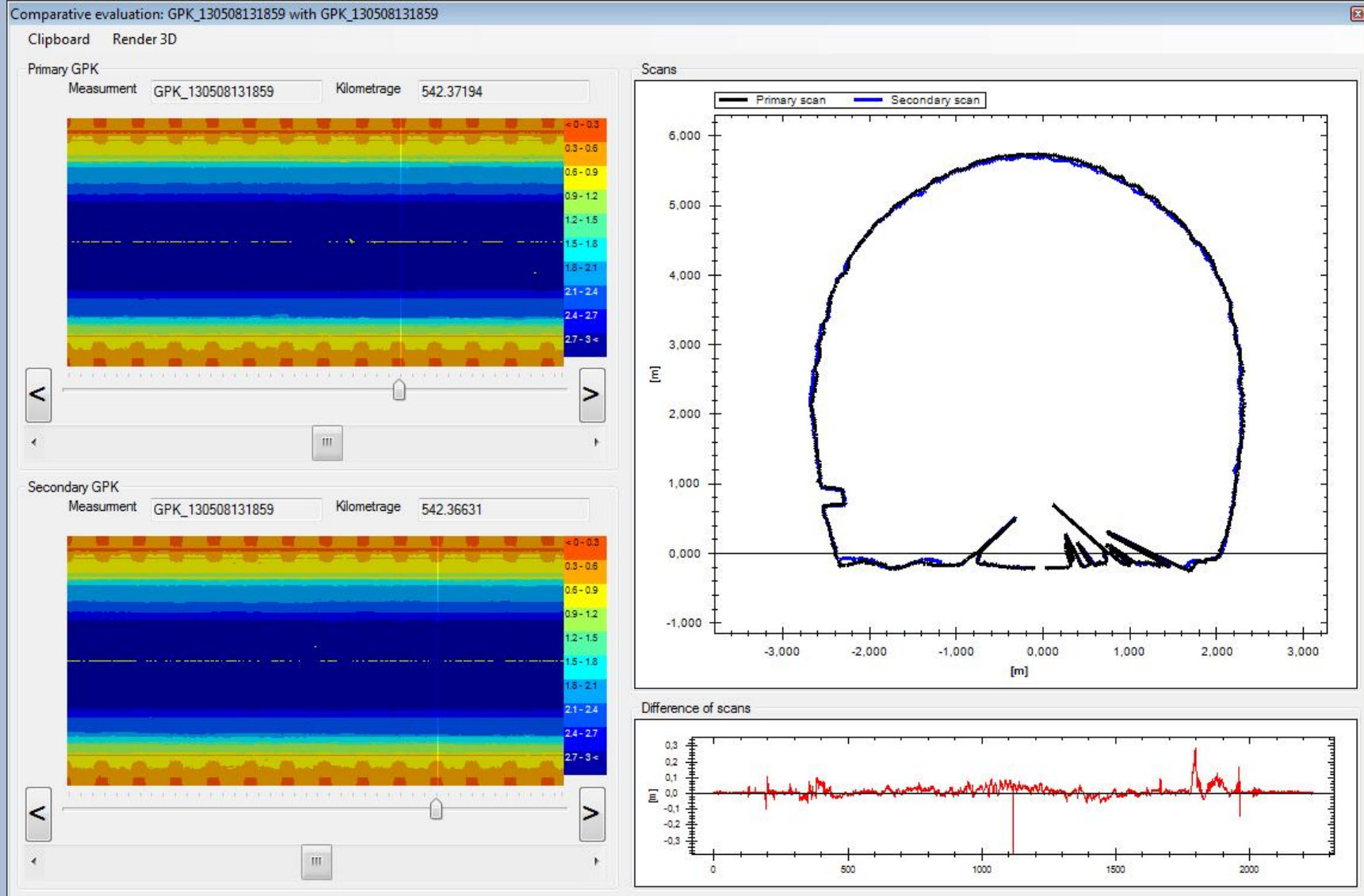
The screenshot shows a software window titled "EvalMainForm". It is divided into three main sections:

- Primary measurement:** A text box contains the path "E:\USB\PTN01-Profilomer_tunelovy\mereni_a_data\130503-boilery\z-Processoru" and a "Select" button to its right.
- Profile evaluation:** A table with five rows, each for a profile. Each row has a text box for the profile name, a "Select" button, and an "Evaluate" button.

| Profile | Profile Name | Select | Evaluate |
|------------|-----------------------|--------|----------|
| Profile 1: | profil_01.dxf | Select | Evaluate |
| Profile 2: | profil_02.dxf | Select | Evaluate |
| Profile 3: | Profil_03-Turecko.dxf | Select | Evaluate |
| Profile 4: | Profil_04-Turecko.dxf | Select | Evaluate |
| Profile 5: | Profil_05-Turecko.dxf | Select | Evaluate |
- Secondary measurement:** A text box contains the same path as the primary measurement and a "Select" button to its right.

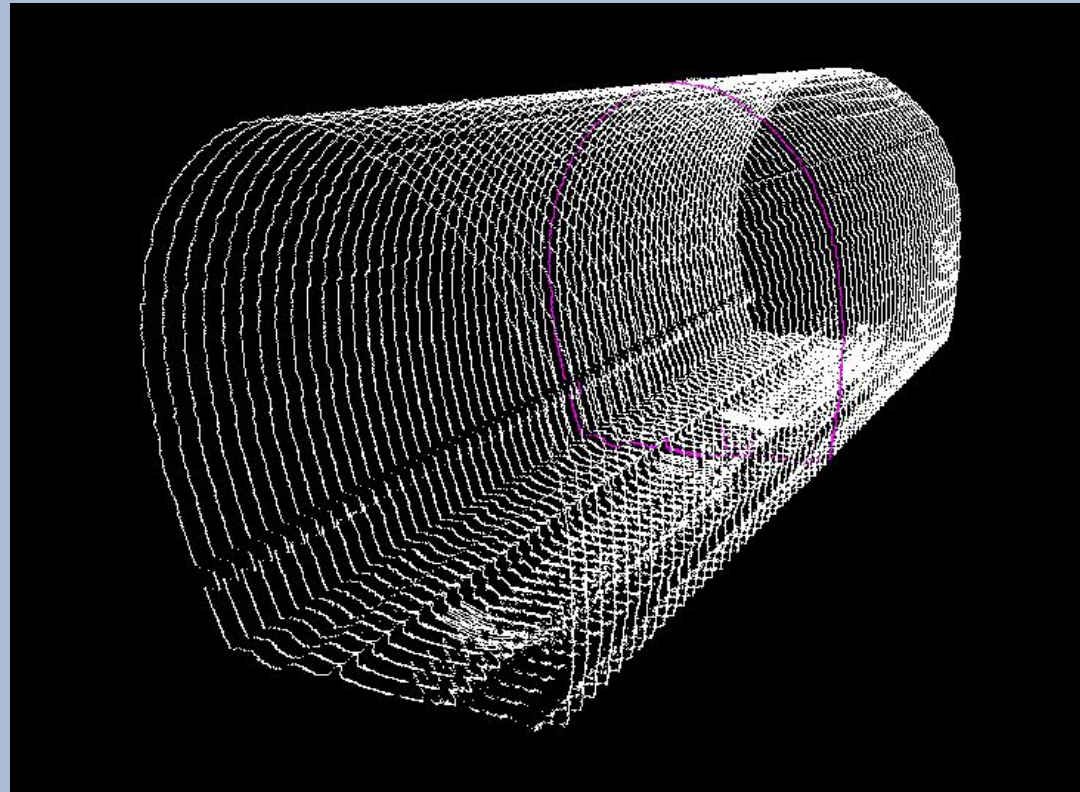
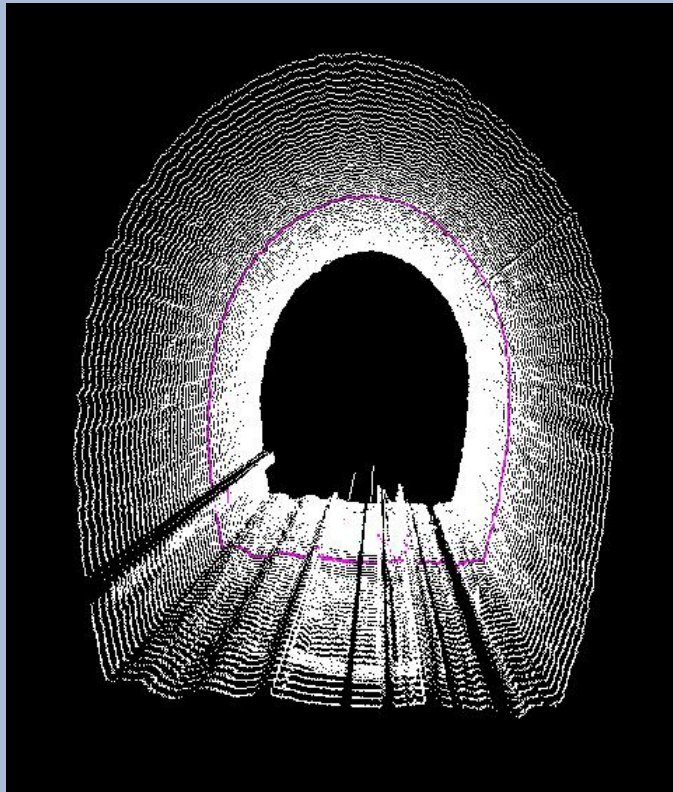
At the bottom of the window, there is a large button labeled "Comparative evaluation".

Comparative evaluation



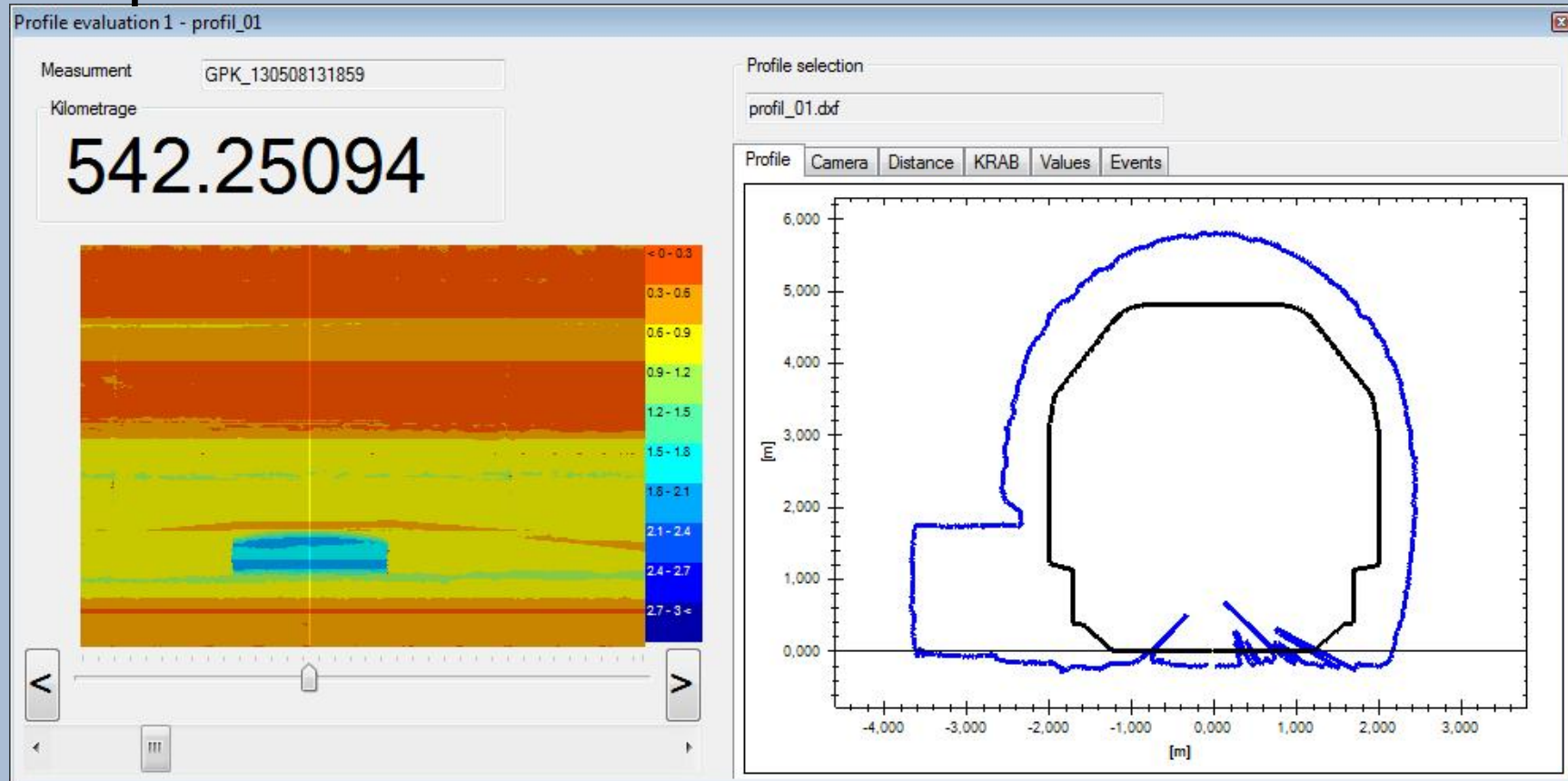
3D Visualisation

- 3D view of any part of measured track
- Ability to rotate image for improved clarity
- Color highlighting of actual position



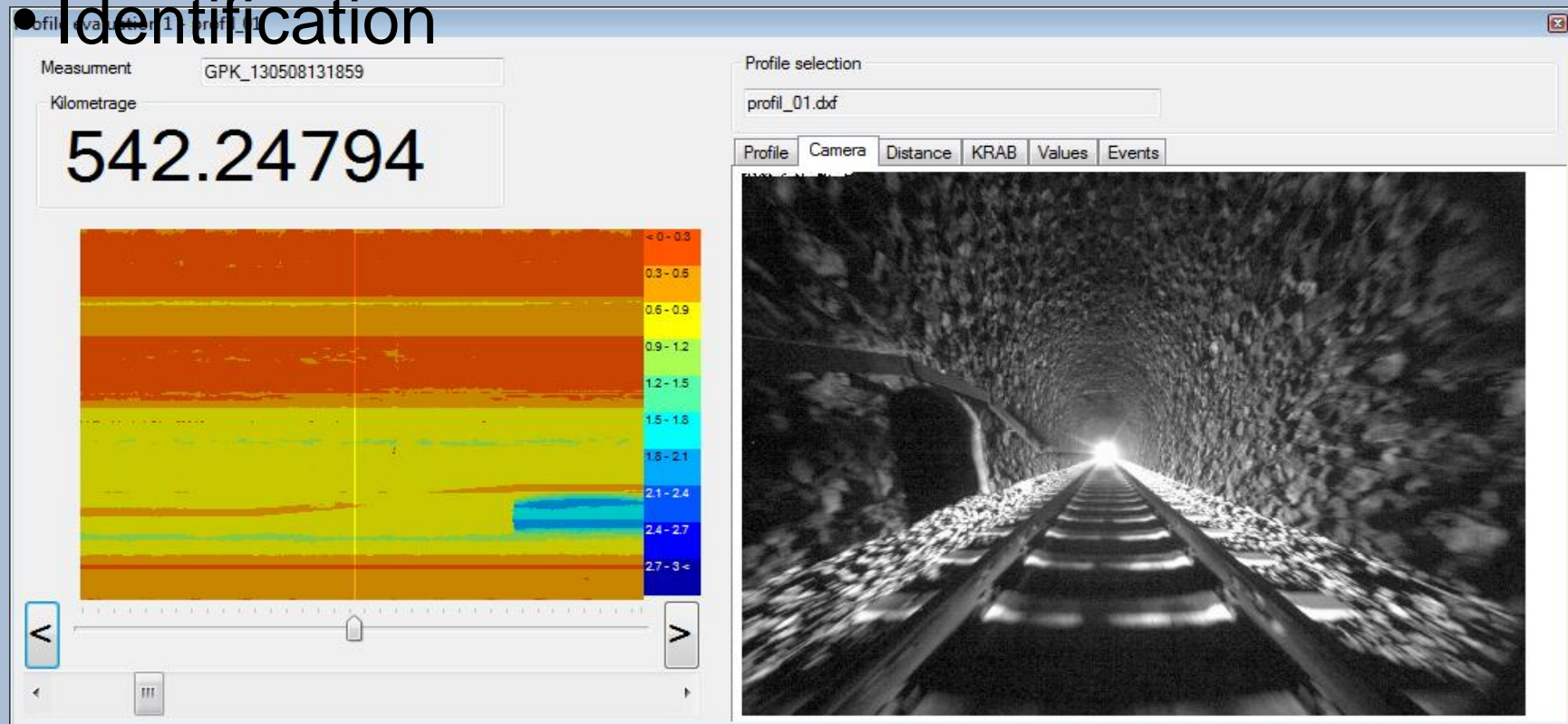
Clearance - Profile

- Requested and measured profile visualisation
- Distance color diagram for quick evaluation preview



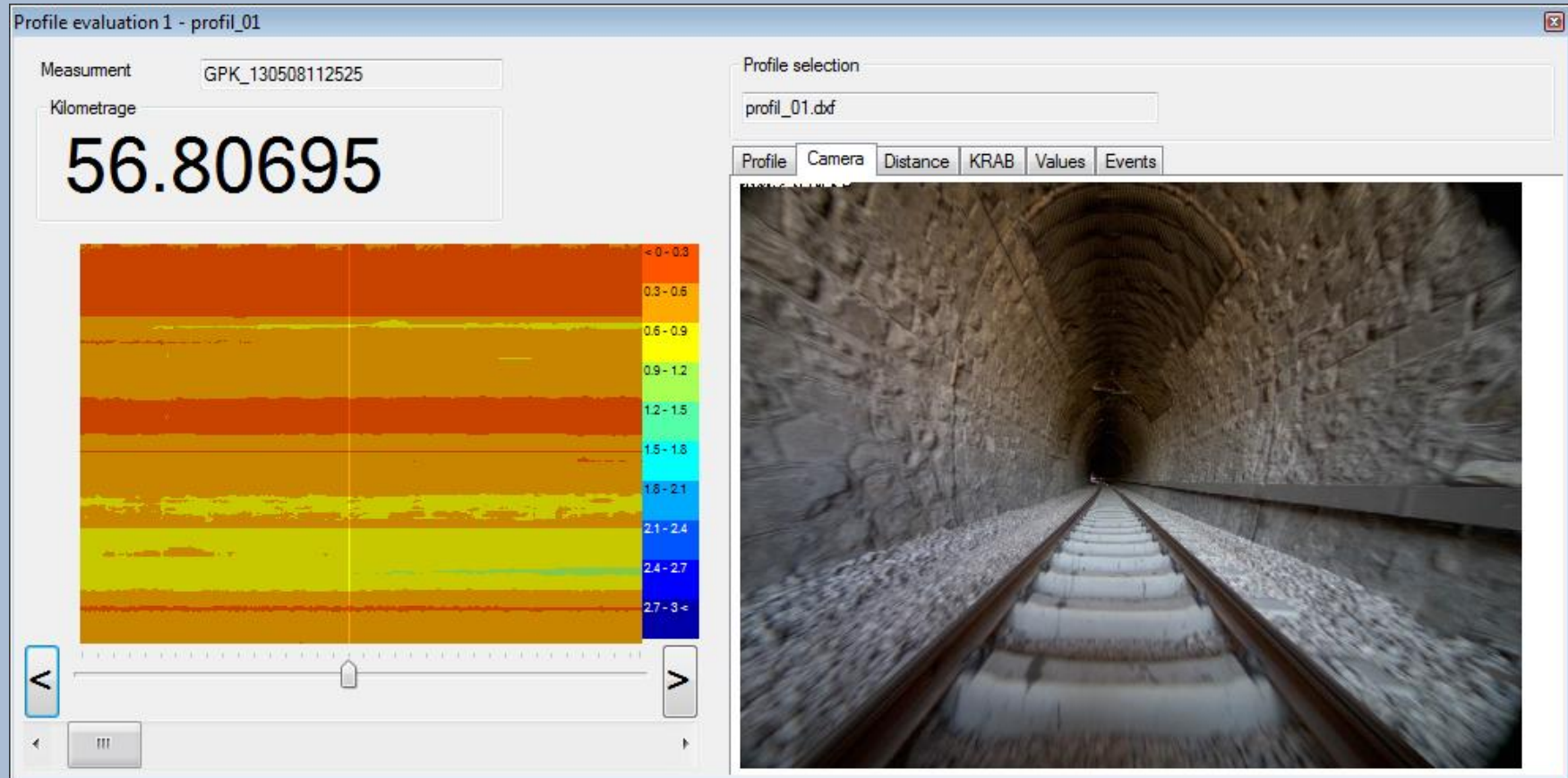
Clearance – Camera: Night Mode

- Night camera scans for improved identification of measured object.
- Camera is synchronised with kilometrage and profiles
- Identification



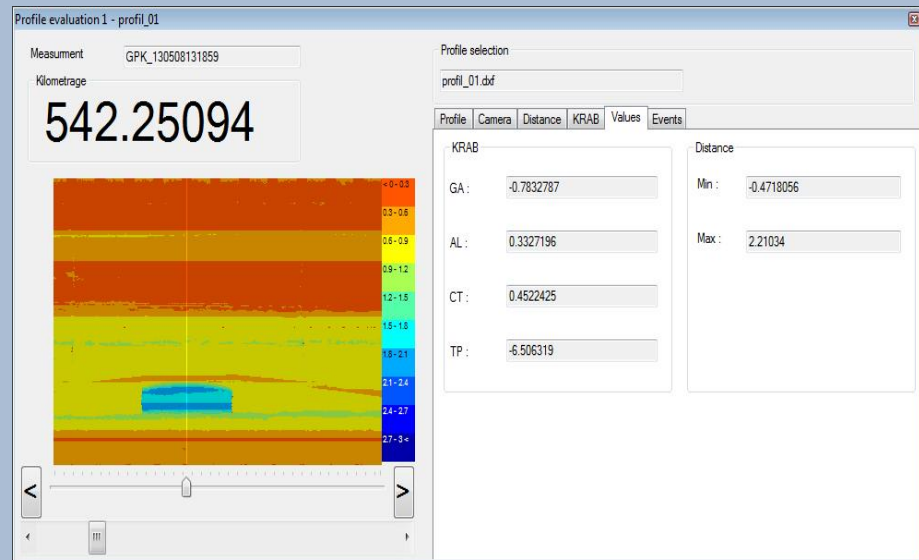
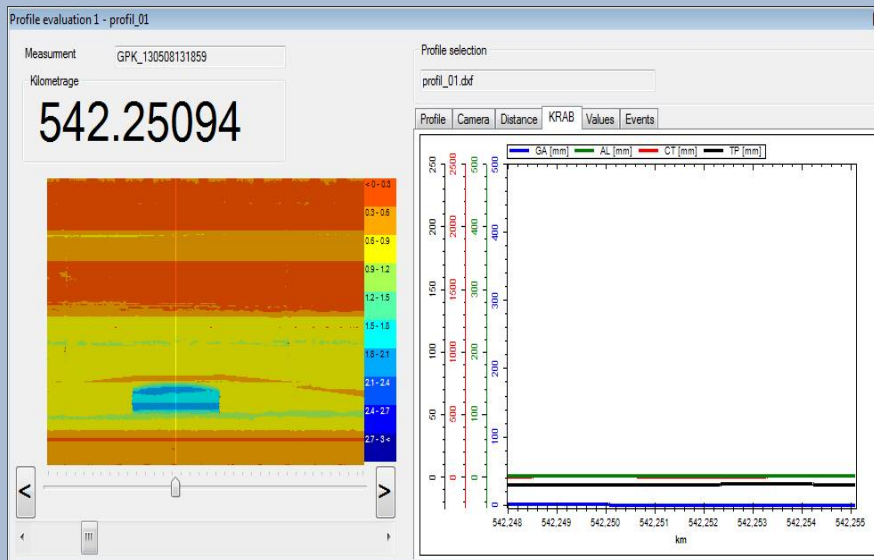
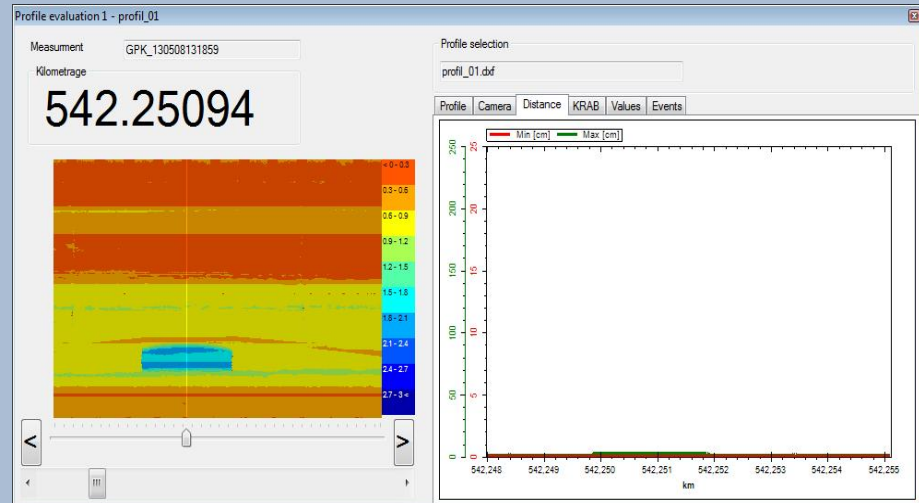
Clearance – Camera: Day Mode

- Day camera scans for color scans.
- Camera is synchronised with kilomerage and profiles

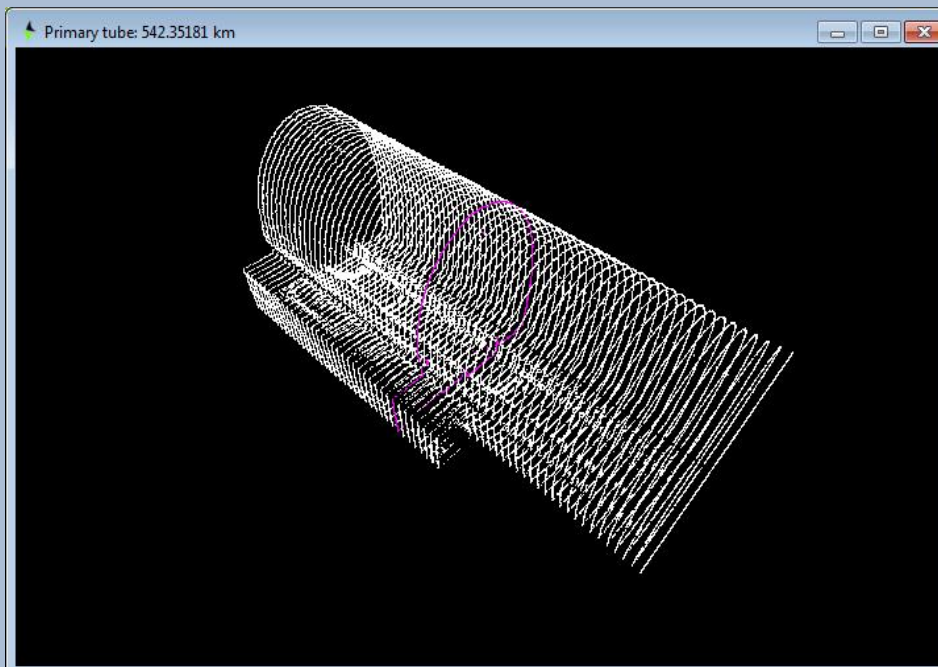
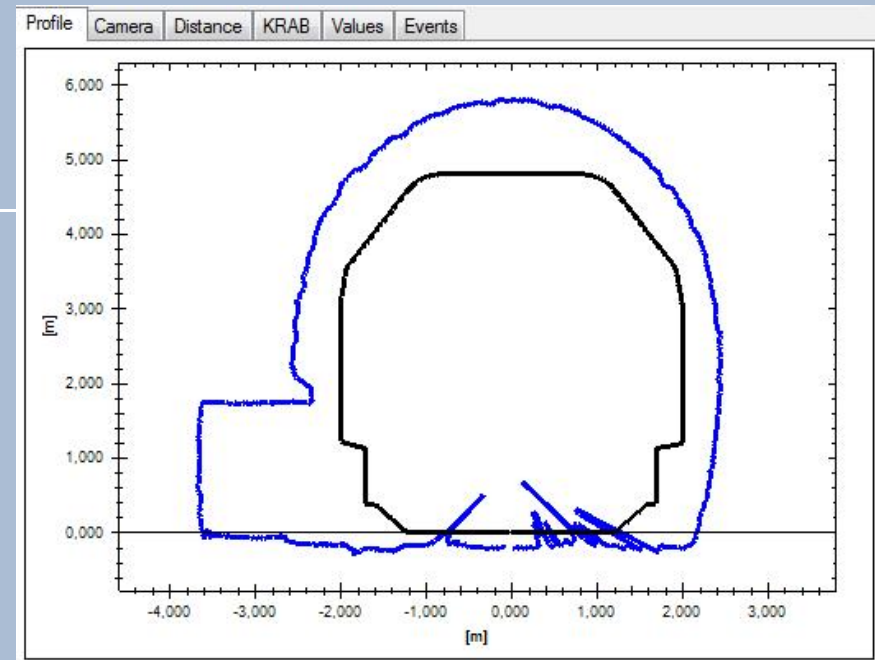
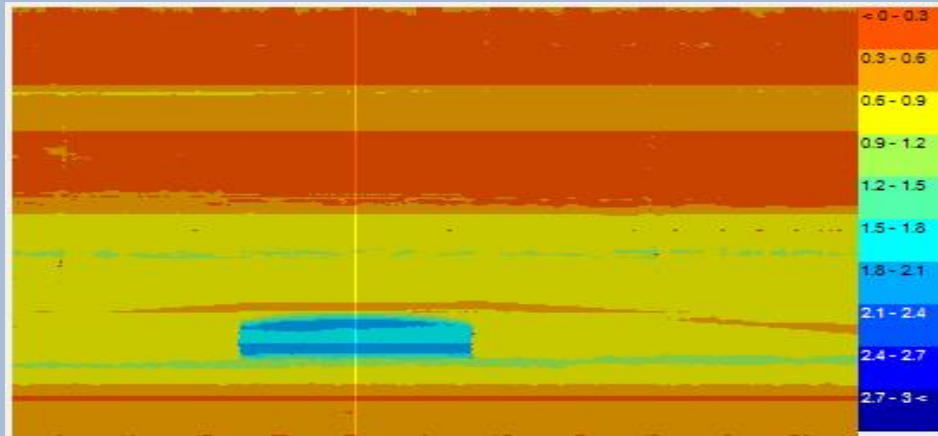


Clearance - Other signals

- Visualisation of signals:
 - KRAB
 - Min a max clearance distance
 - values table
 - events list

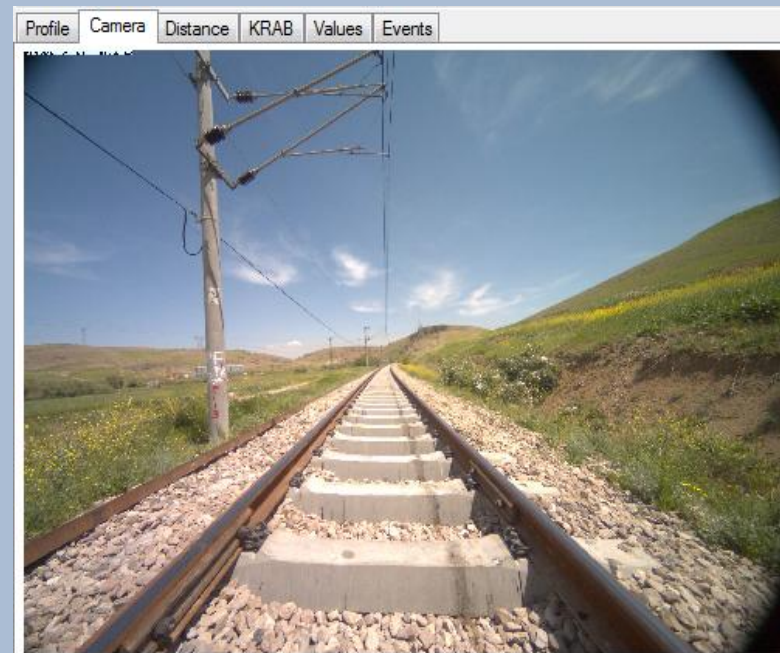
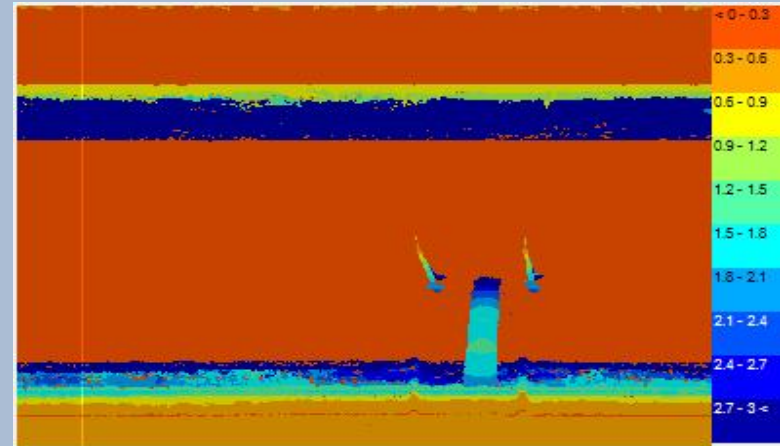
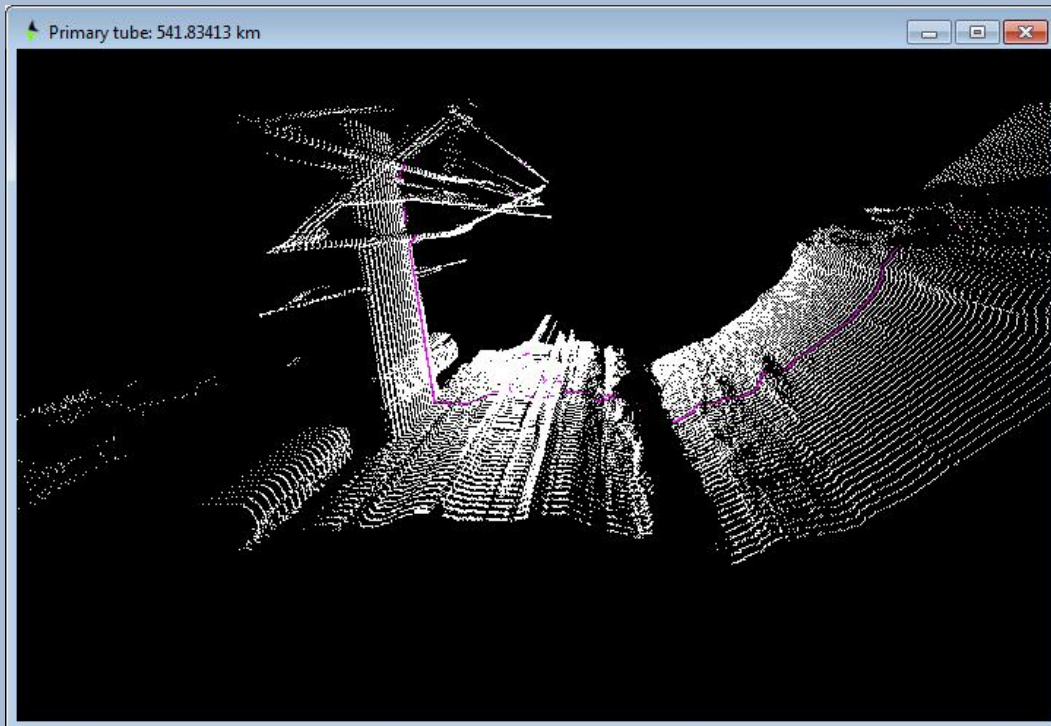


Example - Tunnel Evaluating



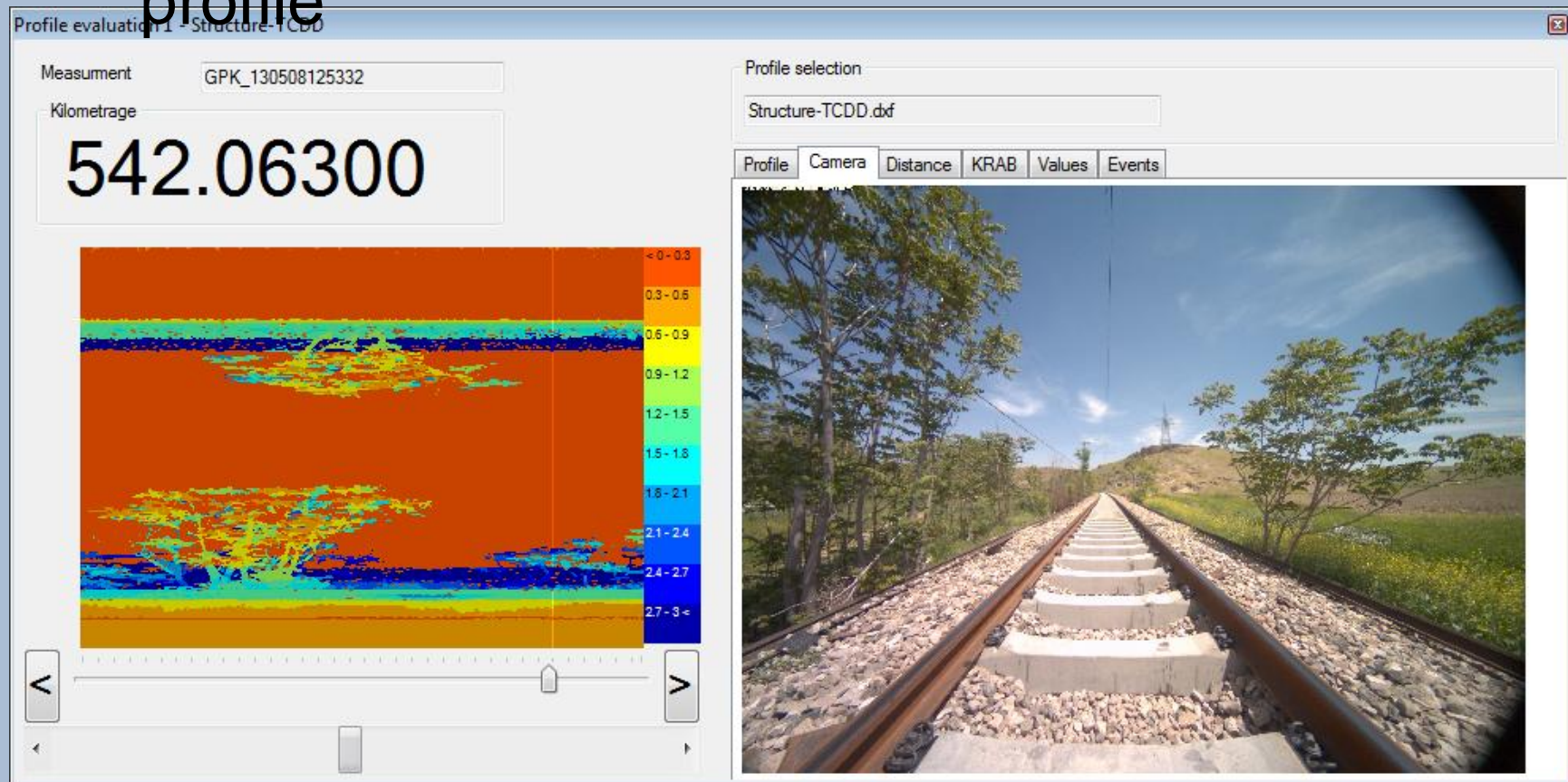
Example - Surrounding

- Catenary example measurement

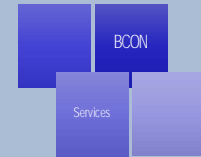


Example - Surrounding

- Vegetation around the track measurement
Usable for local tracks to check clearance
profile



Contacts



Australia

Brendan Coolahan +61 416 115 627

BCON Services Pty Ltd

Sales - Support – Calibration Services

brendan.coolahan@bconservices.com.au

www.bconservices.com.au

KZV.sro (Manufacturer)

Refer website for a full list of available
products - www.kzv.cz

E